



HWS HOUSING AND
WORKFORCE
SOLUTIONS
ENGAGE. ENCOURAGE. EQUIP.

2023
Riverside County
Continuum of Care

HOMELESS POINT-IN-TIME COUNT Summary

The federally mandated count of people experiencing sheltered and unsheltered homelessness on a single night was conducted January 25, 2023. The data collected is used to demonstrate the need for services, resource planning, and to inform the community about homelessness.

More than a Count



2023 POINT-IN-TIME COUNT

3,725 total

12% Increase from 3,316 (2022 PIT Count)

Unsheltered **2,441**

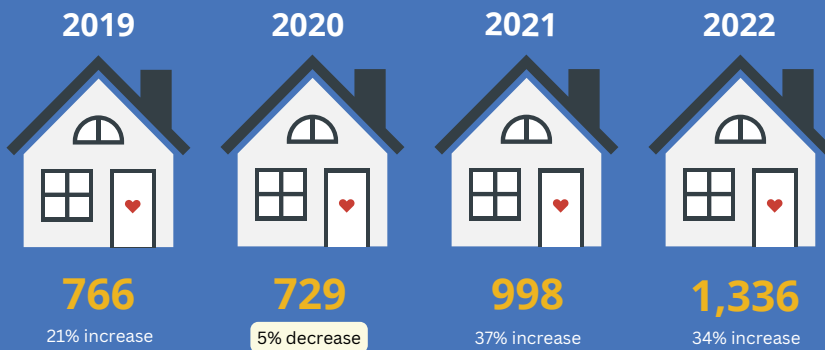
23% Increase from 1,980 (2022 PIT Count)

Sheltered **1,284**

4% decrease from 1,336 (2022 PIT Count)

Sheltered Annual Totals

and % change from previous year



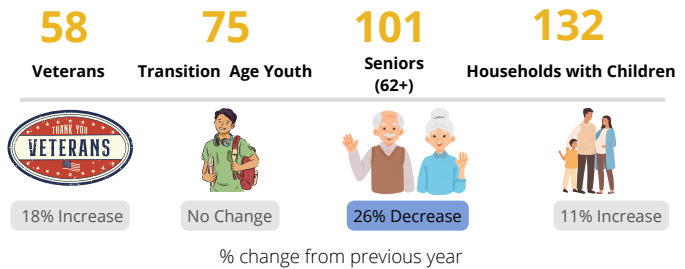
1,284 Sheltered Total

By Supervisory

District

District 1	396
District 2	112
District 3	206
District 4	406
District 5	164

Subpopulation



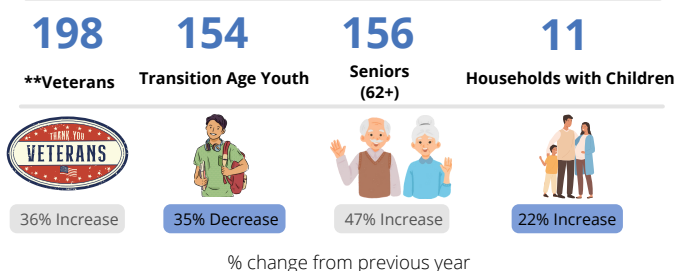
2,441 Unsheltered Total

By Supervisory

District

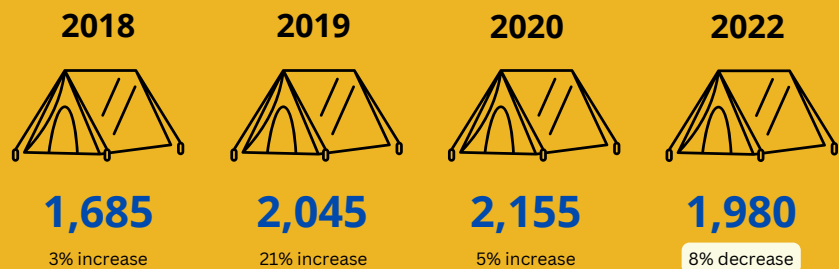
District 1	742
District 2	260
District 3	131
District 4	755
District 5	553

Subpopulation



Unsheltered Annual Totals

and % change from previous year



*2021 Unsheltered PIT Count was not conducted as a result of COVID exemption

** number reported is extrapolated, total unsheltered interviewed veterans is 100 (30% increase from 2022)

SUB-POPULATION TOTALS



256
Veterans

31% Increase



143
Households
with Children

12% Increase



229 Transition
Age Youth (18-24)

27% Decrease



257
Seniors 62+

6% Increase

21%

Unsheltered
Persons
Experiencing First
Time Homelessness

Top 3 *Primary* Factors

Contributing to Unsheltered Homelessness Reported

- 1.** Family Disruption 27%
- 2.** Lack of Income 19%
- 3.** Unemployment 12%

MORE THAN A COUNT INITIATIVE



32% of surveyed
individuals requested
post-count services



784 individuals referred to
services



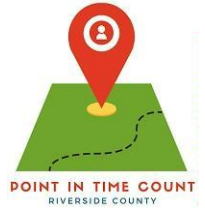
Top 3 requested services

- 1.** Housing Services
- 2.** CalFresh & Cashaid
- 3.** Food Pantries

Unsheltered Interviewed Only

District and City Breakdown

*Data displayed is based on newly adopted district boundaries

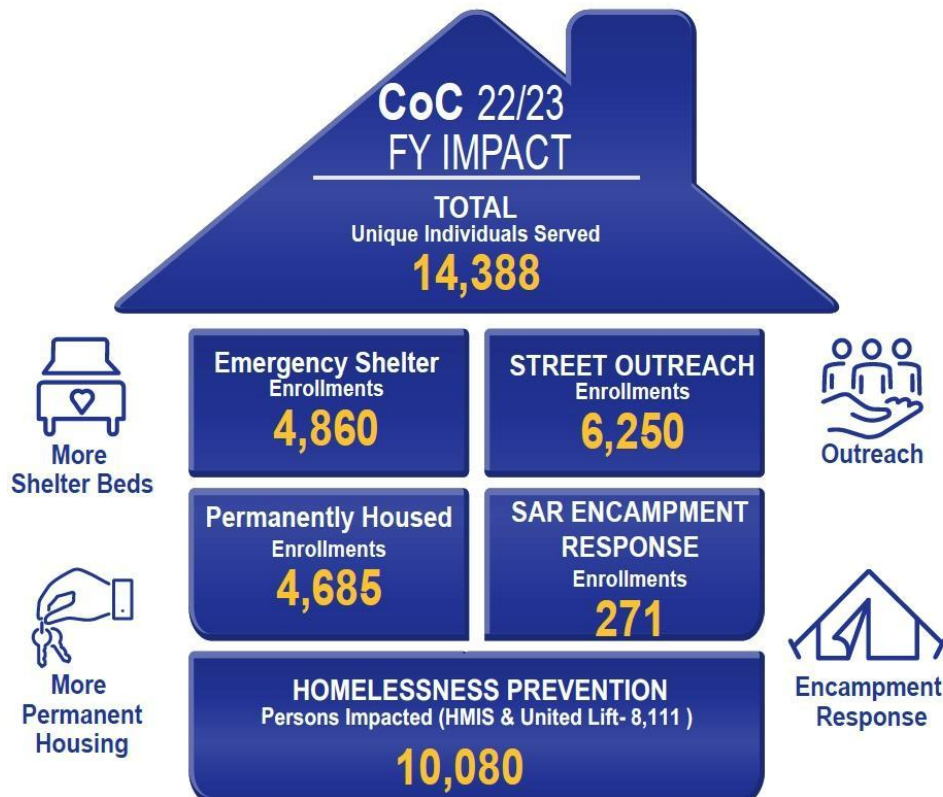


District 1			
	Unsheltered 2023	Sheltered 2023	Total
Perris	90	24	114
Riverside	605	372	977
Wildomar	10	36	46
Unincorporated	47	0	47
Total	752	432	1184
District 2			
	Unsheltered 2023	Sheltered 2023	Total
Canyon Lake	0	0	0
Corona	65	50	115
Eastvale	7	18	25
Jurupa Valley***	79	3	82
Norco	13	9	22
Lake Elsinore	78	32	110
Unincorporated	18	0	18
Total	260	112	372
District 3			
	Unsheltered 2023	Sheltered 2023	Total
Menifee	25	0	25
Murrieta	33	132	165
Temecula	35	38	73
Unincorporated	28	0	28
Total	121	170	291
District 4			
	Unsheltered 2023	Sheltered 2023	Total
Blythe	105	7	112
Cathedral City	40	5	45
Coachella	67	7	74
Desert Hot Springs	107	15	122
Indian Wells	0	0	0
Indio	108	319	427
La Quinta	4	0	4
Palm Desert	39	0	39
Palm Springs	239	29	268
Rancho Mirage	3	0	3
Unincorporated	43	24	67
Total	755	406	1161
District 5			
	Unsheltered 2023	Sheltered 2023	Total
Banning	40	50	90
Beaumont	33	0	33
Calimesa	8	0	8
Hemet	207	66	273
Moreno Valley	77	24	101
San Jacinto	120	24	144
Unincorporated	68	0	68
Total	553	164	717

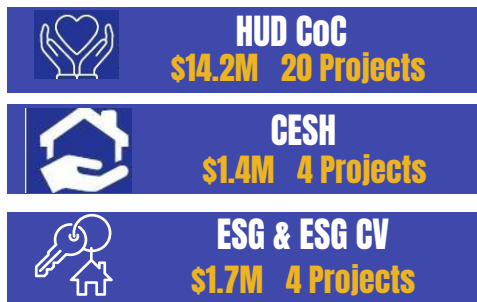


IMPACT REPORT

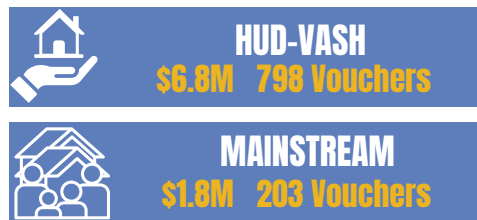
FY 2022/2023



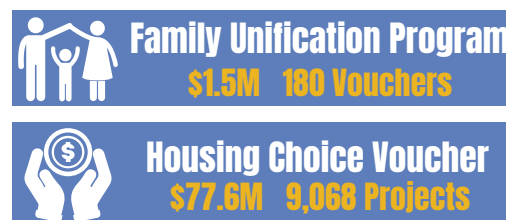
HOMELESS FUNDING & PROGRAMS FOR RIVERSIDE COUNTY



CONTINUUM OF CARE
TOTAL \$62M



HOUSING AUTHORITY
TOTAL \$87.7M



**HOUSING & COMMUNITY
DEVELOPMENT**
TOTAL \$320.7

