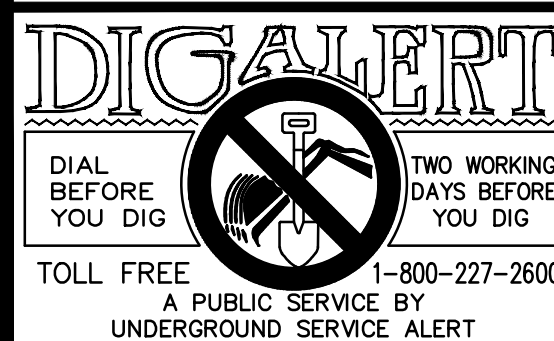
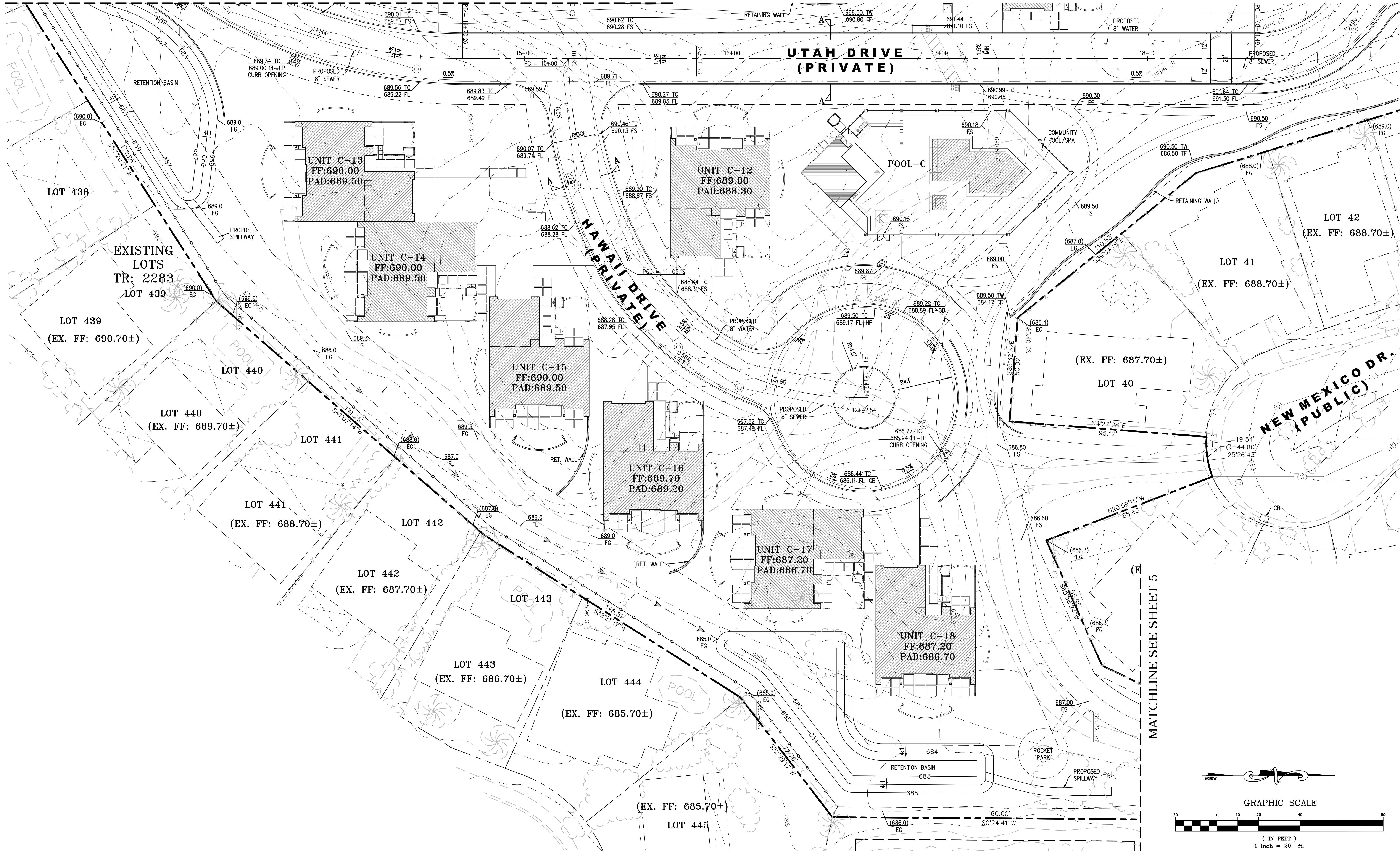


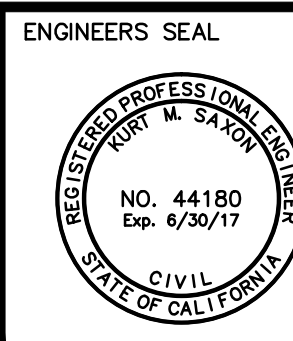
MATCHLINE SEE SHEET 2



**BENCHMARK:**  
ELEVATIONS AS SHOWN HEREON ARE IN TERMS OF THE NORTH AMERICAN VERTICAL DATUM OF 1988 BASED LOCALLY UPON THE FOLLOWING CITY OF LA QUINTA BENCH (PLUS 500'). BENCH MARKS:  
NAME: NAD 88 ELV. (FT) ACCURACY  
235 528.789  
335 508.777  
440 492.884

**BASIS OF BEARINGS:**  
BEARINGS SHOWN HEREON ARE BASED UPON THE CENTERLINE OF TENNESSEE AVENUE SHOWN AS NORTH 00°08'57" EAST PER MAP OF TRACT NO. 2283 FILED IN BOOK 42 PAGES 82 THROUGH 89 INCLUSIVE OF MAPS, IN THE OFFICE OF THE COUNTY RECORDER OF RIVERSIDE COUNTY, CALIFORNIA.

ENGINEER			REVISIONS	CITY APPR. DATE
MARK	BY	DATE		



PREPARED BY:  
**saxonengineering**  
SAXON ENGINEERING SERVICES, INC.  
2009 TEMPLE HEIGHTS DRIVE, SUITE A, OCEANSIDE, CA 92066  
TEL: 949.366.2180 FAX: 800.653.4193

PREPARED UNDER THE DIRECT SUPERVISION OF:  
KURT M. SAXON RCE#44180 EXP. 06/30/17

CITY OF PALM DESERT  
DEPARTMENT OF PUBLIC WORKS

APPROVED BY:  
BO CHEN, P.E.  
CITY ENGINEER  
R.C.E. #4819, EXP. 6/30/2015

REVIEWED AND RECOMMENDED BY: DATE

PLAN CHECKED BY:  
CIVIL  
TRAFFIC  
LANDSCAPE



**CITY OF PALM DESERT**  
**PRELIMINARY GRADING PLAN**  
**TRACT NO. 37242**  
**PALM DESERT COUNTRY CLUB**  
**77-200 CALIFORNIA DRIVE**  
**PALM DESERT, CA 92211**

**SHEET 4**  
**OF 5 SHEETS**  
CITY FILE NUMBER